



# Jump PTT POCM

## Push-to-Talk Over Cellular (PoC) Mobile Radio

- Nationwide Coverage with 4G/LTE Networks
- Industry Leading Voice Quality with Digital Noise Suppression
- Supports Instant Group and Individual Calling
- Compact and Rugged Radios that are Easy to Use
- GPS Location Tracking for the Web-based Dispatching App

## A Nationwide Group Communications Solution

Jump PTT POCM Push-to-Talk over Cellular (PoC) mobile radios are professional-grade communications devices that provide clear push-to-talk communication, instant group calling, and location tracking for reliable and efficient fleet dispatching.

Unlike cell-phones, tablets, and handheld devices, the POCM is a legal and DOT compliant device for safe communications while driving.

The POCM is supported on the Jump PTT 4G/LTE nationwide network (powered by AT&T).

The POCM is also supported on a web-based dispatch application for communication and location management. It offers nationwide voice and video group calling, along with GPS location tracking.



## NATIONWIDE COVERAGE

- Cellular SIM card enables mobile network access for nationwide coverage with cellular 4G/LTE connectivity
- Dual LTE paddle antennas improve RX sensitivity by 3dB for excellent reception in weak signal areas

## INSTANT GROUP & INDIVIDUAL CALLING

- Push-to-Talk button on the handheld microphone initiates instant voice calls to groups or individuals
- Supports instant group calling from the Jump PTT Dispatch web-based communications and location tracking application

## INDUSTRY LEADING AUDIO QUALITY

- Digital noise cancellation technology
- Distortion and howling suppression
- Exclusive patented acoustic speaker cavity and forward facing 4 Watt high-volume speaker
- Delivers excellent voice quality in loud environments

## GPS POSITIONING

- Highly accurate external GPS antenna enables speed monitoring and real-time location tracking with breadcrumbs and geofencing with the Jump PTT Dispatch application

## COMPACT AND EASY TO INSTALL

- Weighing only 10.6 ounces, the POCM is compact and narrow for flexible installations
- Rotating mounting bracket for attaching the POCM on top of the dashboard or on a vertical surface in the vehicle
- Highly-sensitive, dual LTE antennas reduce the need to install an external antenna (depending on where the POCM is installed inside the vehicle)

## DESIGNED FOR SAFETY

- Eyes stay on the road with raised tactile buttons, piano style keys, and lightweight handheld microphone for safe and simple push-to-call operation
- Emergency call button enables instant one-touch emergency calls to dispatcher and other PoC devices
- Speeding and driver fatigue notifications

## CLEAR & BRIGHT DISPLAY

- The LCD display screen is easily visible even in bright sunlight

## ANDROID OPERATING SYSTEM

- The POCM is powered by the Android mobile platform

## FLEXIBLE INTEGRATION

- With the standard API and SDK, the POCM communications capabilities can be integrated into mobile fleet management and telematics applications

## BUILT-IN WI-FI

- Built-in Wi-Fi for flexible network access

## RICH WITH ACCESSORIES

- 3.5mm audio jack for wired earpiece accessories
- Micro USB 2.0 port for connecting and powering a variety of external devices
- Built-in Bluetooth for hands-free microphones and other wireless accessories
- 2-pin port for an external loudspeaker

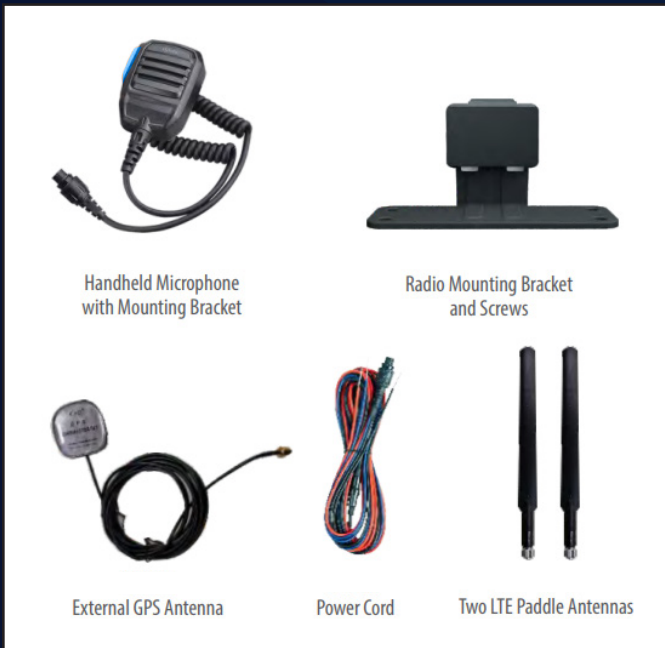
The POCM enables cost-effective fleet communications and dispatching with fast and easy deployments.

The AT&T 4G/LTE network provides reliable nationwide coverage that requires no investment in traditional radio network infrastructure or FCC frequency licensing.

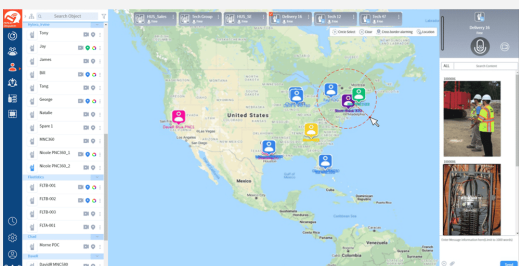
The POCM delivers instant nationwide group and individual calling right out of the box.



## STANDARD ACCESSORIES



## OPTIONAL ACCESSORIES



Jump PTT Dispatch is a powerful web-based dispatch application that supports instant group calling as well as flexible individual calling. Dynamic call groups can be quickly created with a simple list selection or geographically by selecting an area on the dispatch map.

Jump PTT Dispatch leverages the POCM GPS capabilities for tracking of driver locations and travel routes with time stamps. The dispatcher may stun (turn off) and reactivate a radio, receive and transmit emergency calls, and remotely access calls.

# POCM SPECIFICATIONS

## GENERAL

Weight	10.6oz (300g)
Dimensions (H x W x D)	6 5/8" x 2 5/8" x 1 1/2" (170 x 66 x 39mm)
Memory	RAM: 1GB ROM: 8GB
Card Slots	Two Micro-SIM slots, TF Card slot (up to 128 GB)
Display	2" LCD 320x240
Speaker	4W
Port Interfaces	Two LTE antenna ports, 2-pin external speaker port, GPS antenna port, MicroUSB 2.0 connector, 3.5mm audio accessory port, secure10-pin aviation port for handheld mic, power connector
Input Voltage	9-15VDC

## ENVIRONMENTAL

Operating Temperature	-4 °F to +140 °F (-20 °C to +60 °C)
Storage Temperature	-4 °F to +185 °F (-40 °C to +85 °C)
ESD	IEC 61000-4-2, (ESD) ± 12 kV (air); ± 8 kV (contact)
IP Rating	IP54 for water and dust resistance

## STANDARDS & FREQUENCIES

LTE Frequency Bands	FDD-LTE: B1/B2/B3/B4/B5/B7/B8/B12/B13/ B17/B20/B26/B28 TDD-LTE: B38/B39/B40/B41 (2496–2690 MHz) GSM: 850/900/1800/1900 WCDMA: B1/B2/B3/B4/B5/B8
Wi-Fi	2.4GHz 802.11b/g/n
Bluetooth	BT 4.2
Positioning System	GPS (A-GPS)/BDS
Certifications	FCC/CE/IC

